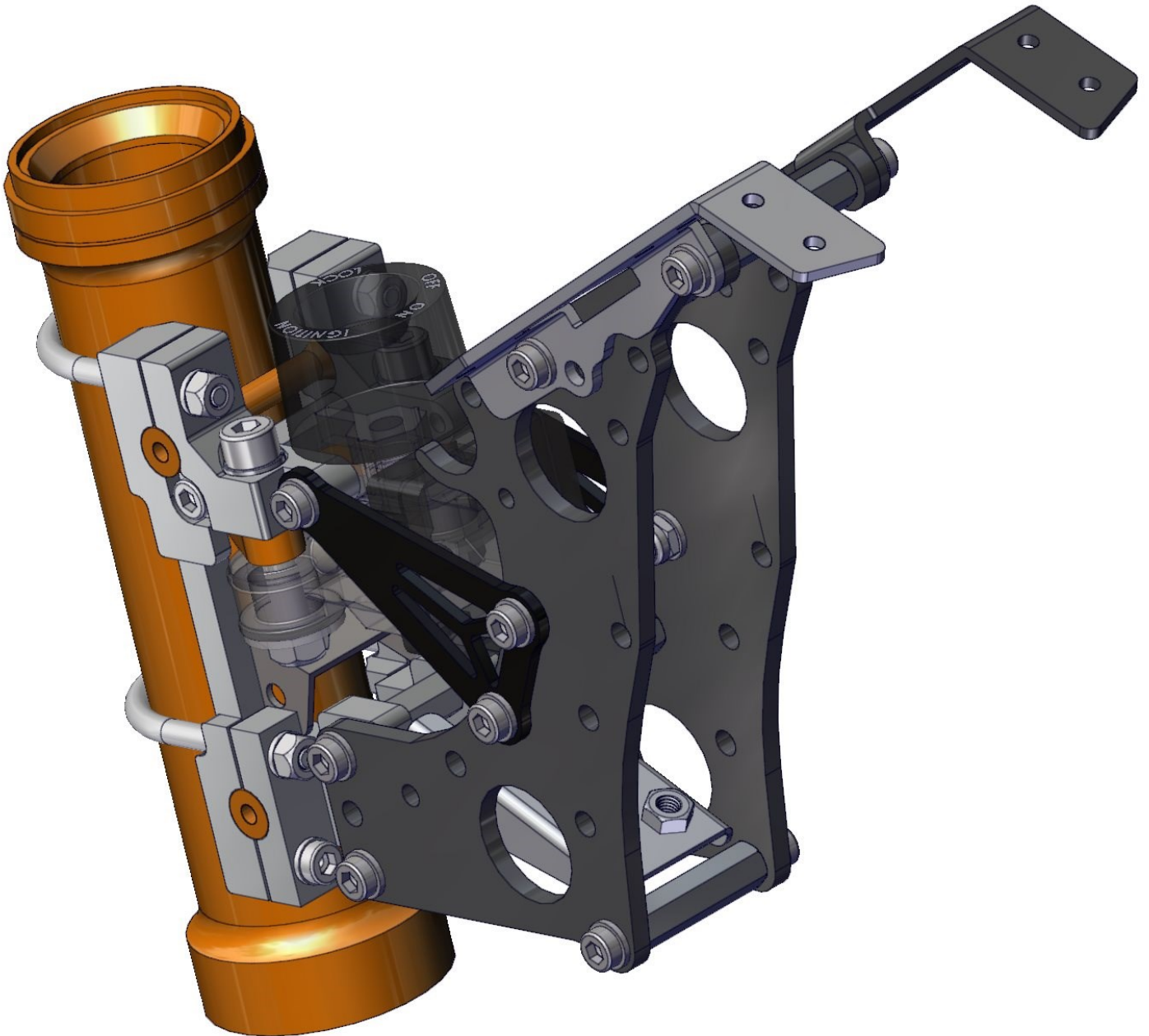


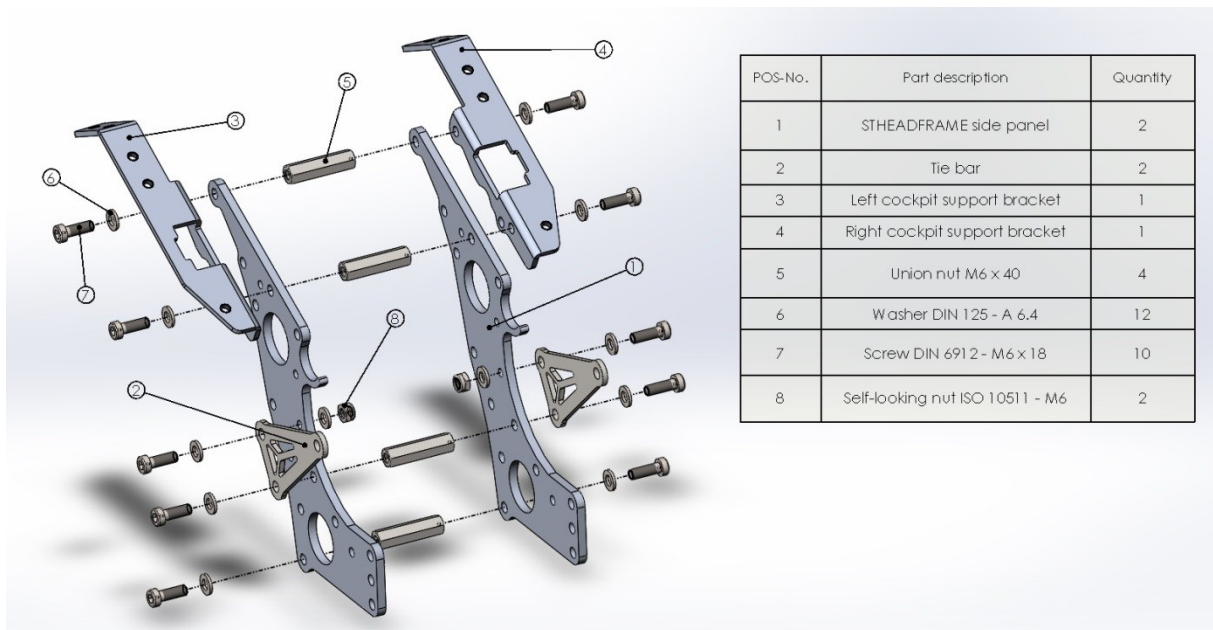
# STHEADFRAME 2.0



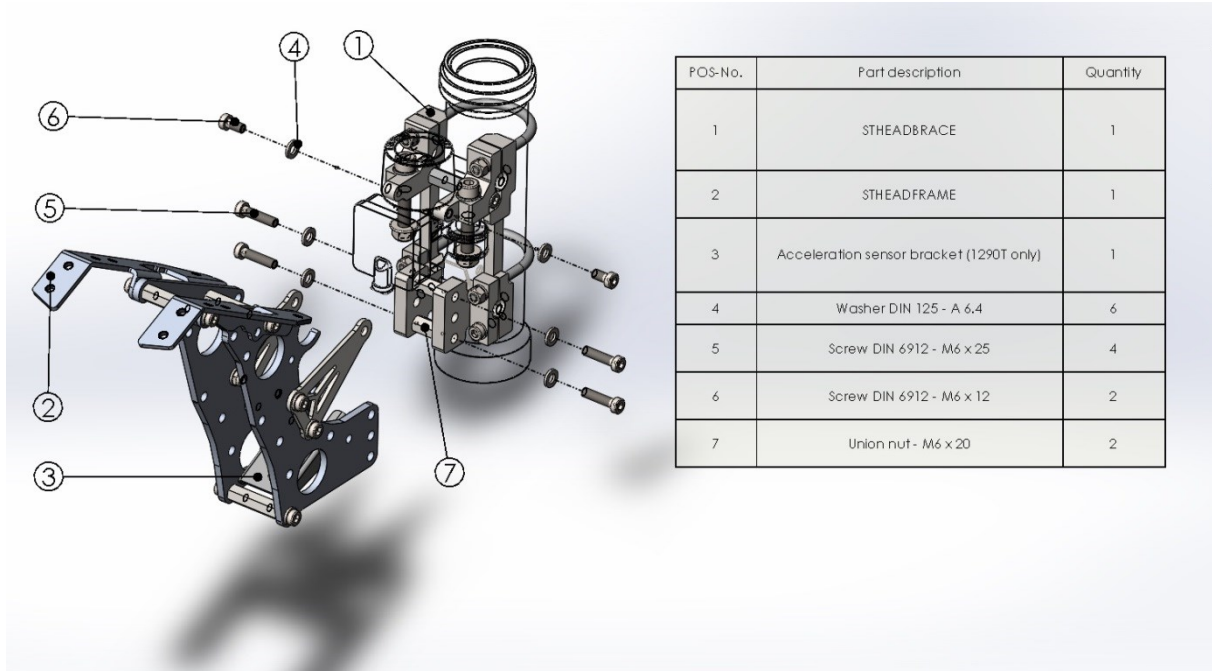
Please use lock tight (for example Loctite® 243) on all screws!



Please take a look below for assembling the STHEADFRAME 2.0.



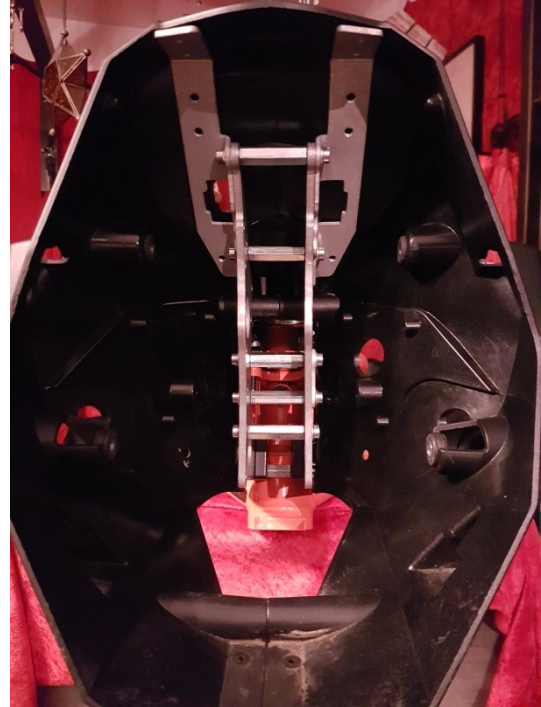
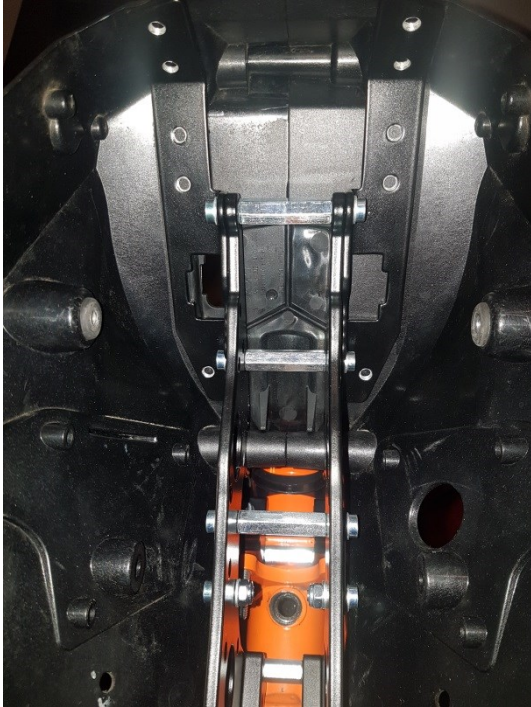
And to connect STHEADBRACE 2.0 and STHEADFRAME 2.0 together.



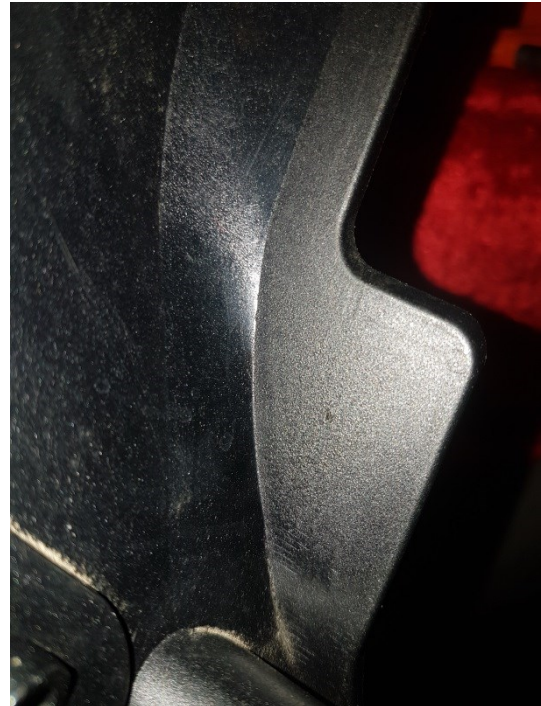
After attaching the STHEADFRAME 2.0 to the STHEADBRACE 2.0 is a good moment to sort out all the wiring before installing both cockpit housing parts.

To modify your uninstalled cockpit housing please see below as well:

Mount both parts of the cockpit housing as shown below, including all OEM screws on the steering head and the three screws used for plastic.



Mark on each half 3 of the 5 holes from the inside (a 6 mm drill for wood would be the best).



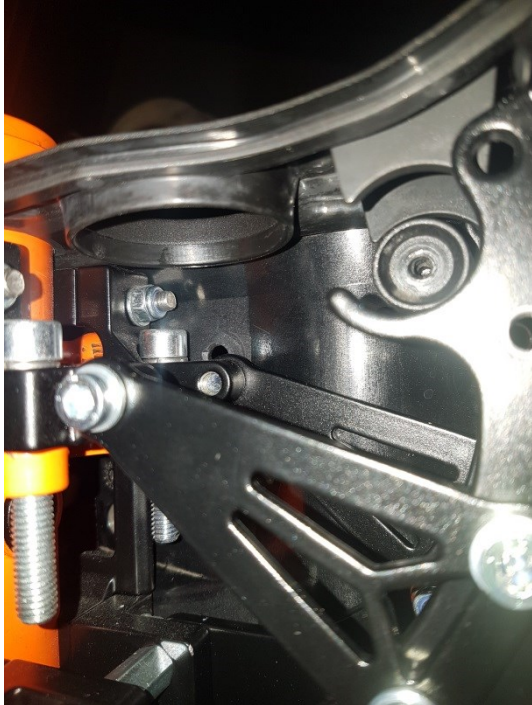
Disassemble the cockpit housing again!

Drill the 4 holes on each side with a medium speed drilling wood drill of 6mm from the inside.

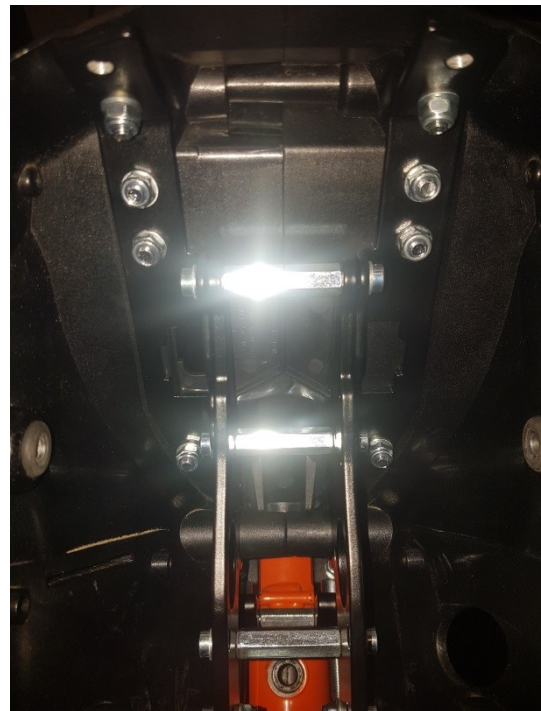


Now is the best moment to put all the wiring back into the STHEADFRAME (don't forget to route the speedo connector to the top again).

Mount both parts of the cockpit. Use the rubber inlay to cover the ignition lock area. Route the speedo connector through the inlay as well.



After you have done that, you can start using the eight lens head screws with flange (M6 x 16).



Now you can use the washers and the self-locking nuts to finally fix your cockpit! If you are going to install a STHEADPOD as well leave the nuts and install the STHEADPOD first. Now you can assemble the other parts of the fairing and your headlight.